



Adaptive Computing Lab

Virtual Magnifying Glass 3.4

Virtual Magnifying Glass is a free, open-source program that provides a magnifying lens that will enlarge portions of the computer screen. This program may be downloaded from the web page provided below:

<http://magnifier.sourceforge.net/#download>

For Windows: Vmg3.4_install.exe is the executable file for version 3.4

This tutorial shows how to use VMB on a Windows XP computer. Other Windows operating systems would have slightly different locations and views.

After running the executable file and installing the program, you may go to Start > Programs > Virtual Magnifying Glass folder > Virtual Magnifying Glass program.

Or you may create a shortcut on your desktop and double click it to run the program.



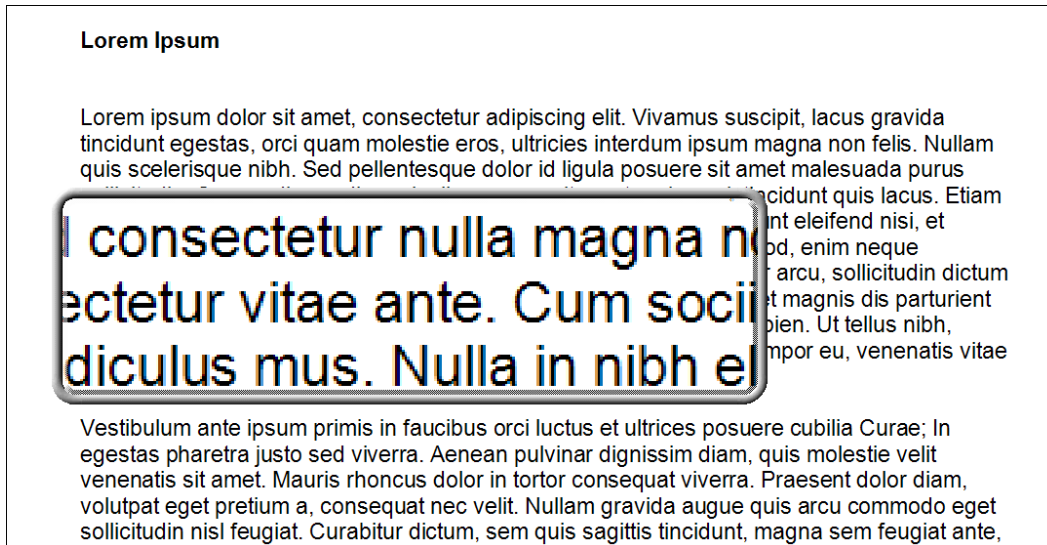
You may also select the setting “Start Magnifying Glass when you log on” option in VMG settings. This will load the program every time the computer is booted.

Regardless of how you open the program, when it is running there will be a VMG icon in the System Tray. This indicates that the program is loaded and running in the background.



To activate the Magnifier, click on the icon in the System Tray. The mouse cursor will now be the Magnifier. When you move the mouse, the Magnifier lens will move. A left mouse click will cause the lens to disappear. The lens will magnify everything inside the lens.

Example of Magnifier lens



To change the settings for the lens

Right click on the VMG icon in the System Tray and you will get a pop up menu like the one to the right.

Show Magnifying Glass... activates the lens

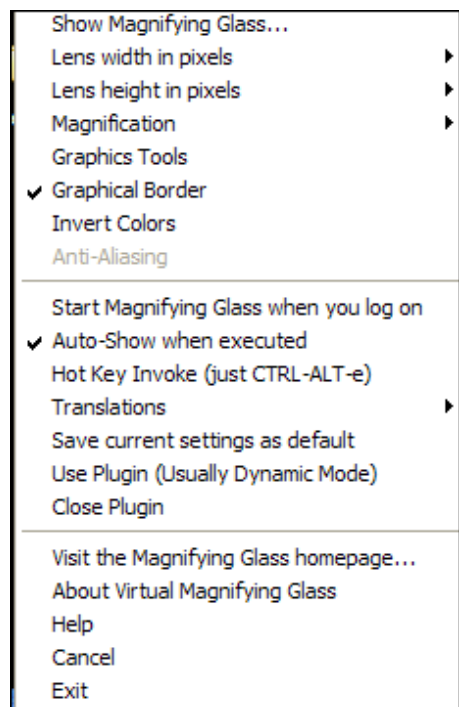
The three options that have a arrow on right allow changes to the Lens.

Lens width in pixels...mouse over and change the width

Lens height in pixels... mouse over and change the height

Magnification...mouse over and select the level from 1x (normal) upwards in the following increments. 1.5x, 2x, 3x, to 4x (8x and 16x are options but are typically non readable by the user).

Other options allow changing the border, inverting colors.



The second section offers some options as to start up, keystrokes, languages, etc. The final section has information and help for VMG as well as a Cancel and Exit option.

Keyboard shortcuts

While the Lens is visible you may also make a number of changes using the keyboard. The keys used for the commands are provided in the table below.

<i>Key</i>	<i>Command</i>
[ENTER] or [ESC]	Hides the glass
Q	Closes the application
Up Arrow	Increases the lens height
Down Arrow	Decreases the lens height
Right Arrow	Increases the lens width
Left Arrow	Decreases the lens width
W	Moves the lens up
S	Moves the lens down
D	Moves the lens to the right
A	Moves the lens to the left
[PAGE UP]	Moves the lens up in big steps
[PAGE DOWN]	Moves the lens down in big steps
B	Activates and Deactivates the graphical border
[MOUSE WHELL UP]	Increase the magnification in small steps
[MOUSE WHELL DOWN]	Decrease the magnification in small steps
+	Increase the magnification in small steps
-	Decrease the magnification in small steps