



# Adaptive Computing Lab

## Adaptive Computing Tutorial

### How to start the On-Screen Keyboard in Windows 7

The Windows 7 operating system has a revamped On-Screen Keyboard included in its accessibility features package. The new keyboard is a scaled down version of full-featured program called ScreenDoors 2000 from Madentec.



This program may be opened in a number of ways.

#### Option 1:

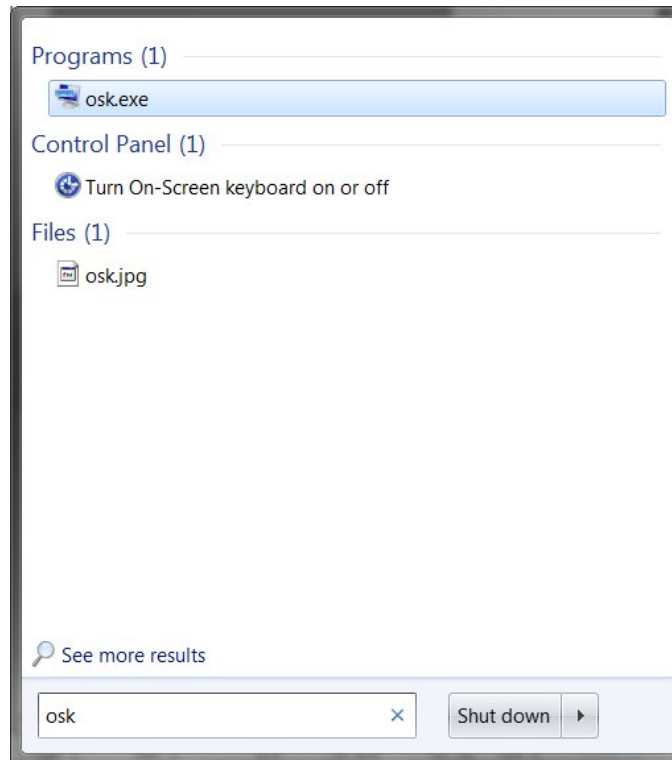
Start > at the “ Search programs and files” command line type “osk” and click hit enter.

## Option 2:

After you have entered “osk” the Search results pane will show possible options such as those seen in the following picture.

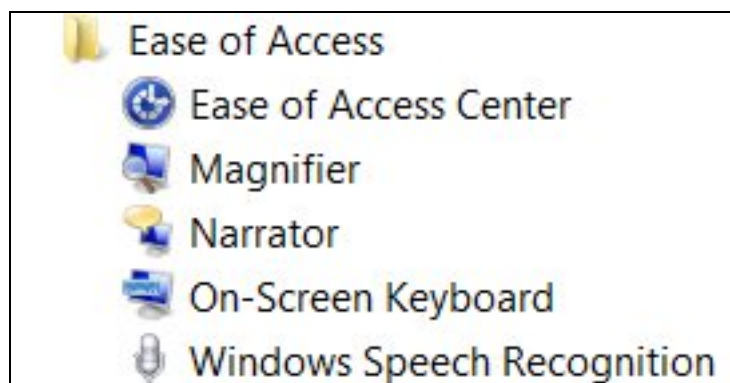
The Program: osk.exe

The Control Panel option: “Turn On-Screen keyboard on or off



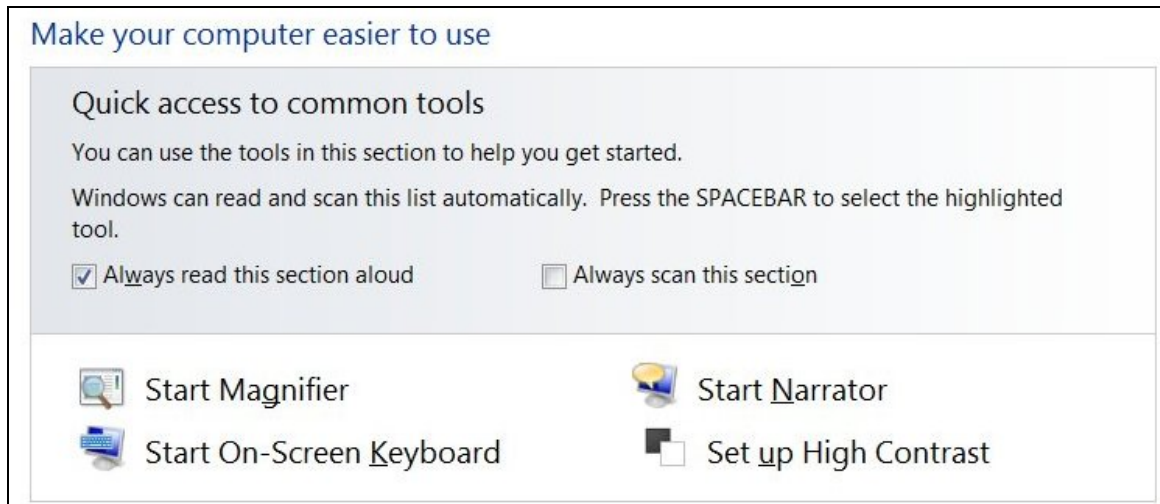
## Option 3:

Start > All Programs > Accessories > Ease of Access > On-Screen Keyboard



## Option 4:

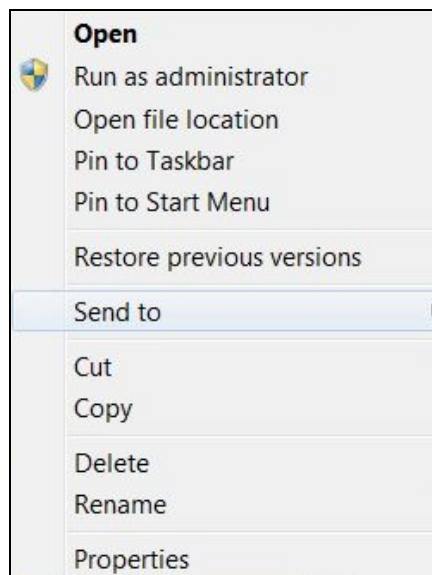
**The Windows Logo key plus U will open the Ease of Access Center. Click on Start On-Screen Keyboard**



## Option 5:

**Create permanent options as shown:**

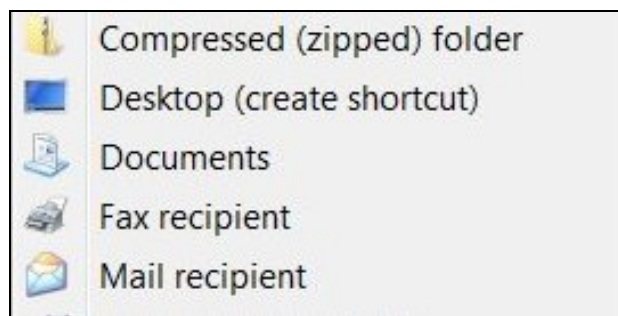
**Follow the steps shown in Option 3 (above) but instead of a left click perform a right click on the On-Screen Keyboard option and you will see a sub-context menu similar to the one below**



**Pin to Taskbar** will put an icon in your Taskbar at the bottom of the desktop that will remain there unless you Unpin it.

**Pin to Start Menu** will put an icon on the Start Menu that will remain there unless you Unpin it.

If you hover the mouse over **Send To** it will open another sub-context menu that will be similar to the image below, by left click on Desktop (create shortcut) you will create a shortcut on the desktop



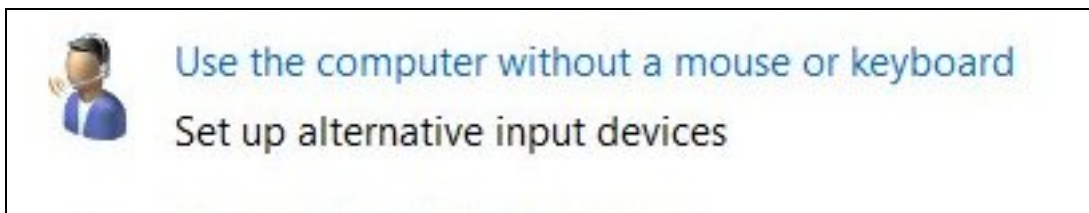
### **Option 6:**

You may change the settings to have the On-Screen Keyboard load when you boot up Windows.

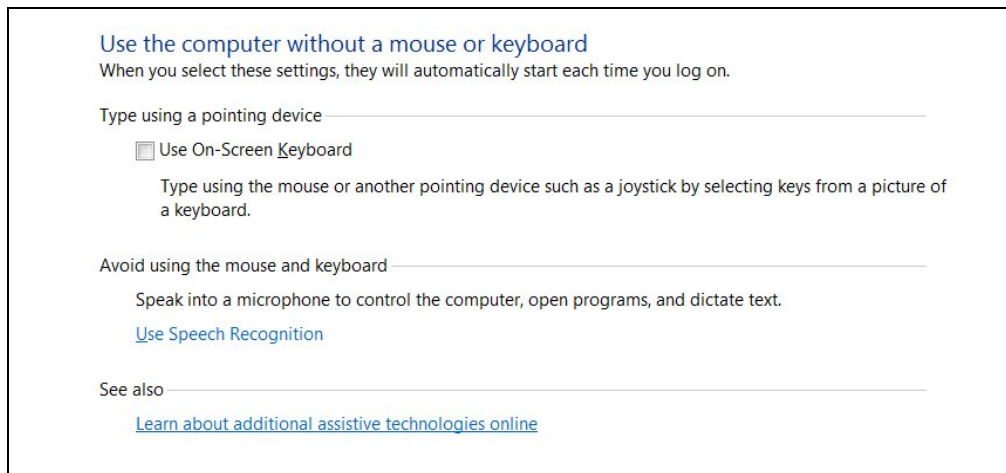
On the standard keyboard or using the On-Screen Keyboard click on the following keyboard shortcut to open the Ease of Access Center:

**Windows Logo key + U**

Select the “Use the computer without a mouse or keyboard” option



**Click the Use On-Screen Keyboard box. This will open the keyboard every time you open Windows.**



## **Option 7:**

**If you have the On-Screen Keyboard applet running you may also get to the dialog box shown above by clicking on the Options key. You will then see the Options dialog box shown below. In addition to being able to change several options you may hit the “ Control whether the On-Screen Keyboard start when I log on” link at the bottom of the box and you will see the dialog box shown in Option 5.**

