



## Adaptive Computing Lab

### **Adaptive Computing Tutorial** **Download, Install, and Configure E-Triloquist**

E-Triloquist is a free program that assists persons with speech issues. The program was developed for a man with ALS and his family has continued the development of the program.

#### **Step 1: Download**

The instructions in this tutorial are based on the v6.1 version of this program. The family updates this program regularly so the version and file names will change periodically. To download this program, go to the website listed below:

<http://www.etriloquist.com/>

In the latest news section, select the most recent version release and click on the Downloads tab in the Menu Bar.



You will be directed to a Download Request Form. The form requests personal information, but the form is optional.

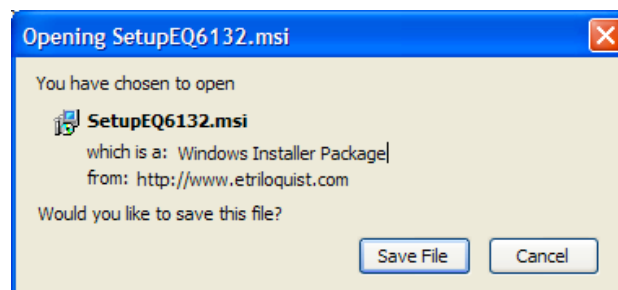
Proceed to the bottom of the page. There are two versions of the download file. One works with Windows XP, Vista and Windows 7. For most users this is the file to download. Click on the Vista or Windows 7 button.

\*\*\*In the event that you are running Windows XP and have no “Voices” installed on your machine, you should download the larger file that includes voices for Mike and Mary. To do this, click on the Windows XP Only button.

The next page offers the Download Now button and some general information. Click on the button.



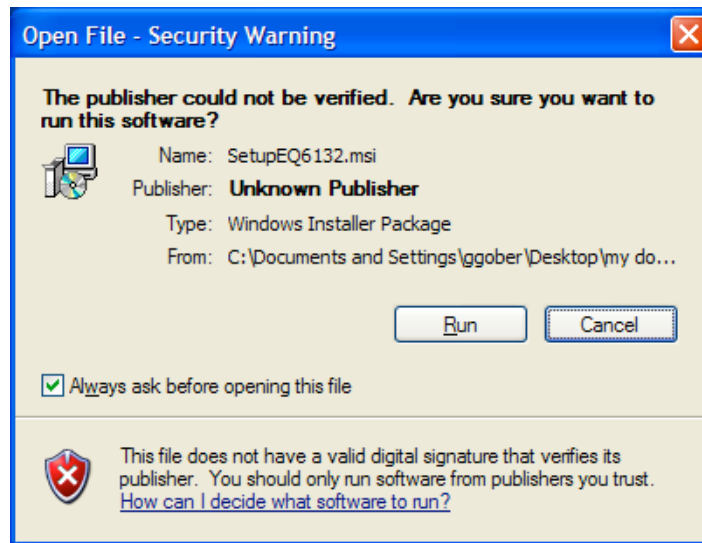
This will bring up a dialog box...click on the Save File button.



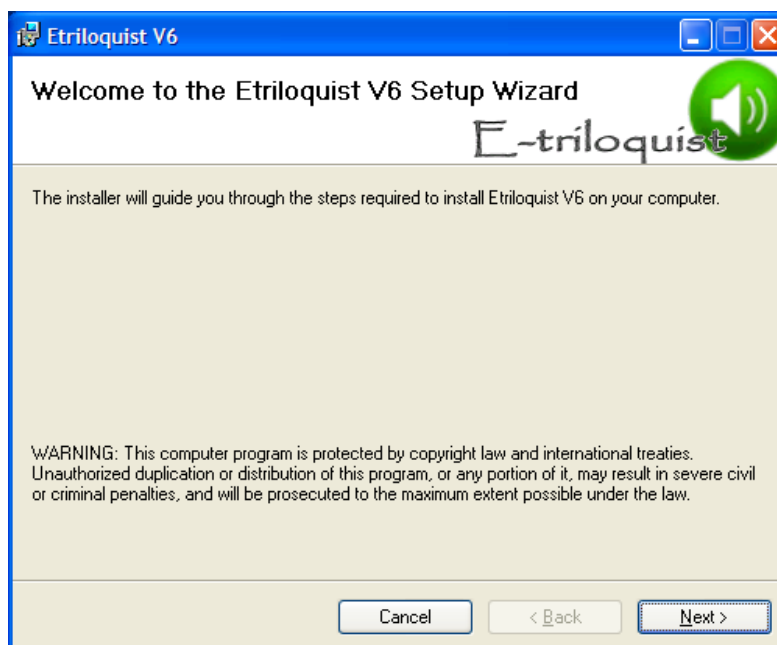
## Step 2: Installation

Navigate to the folder that contains your downloads. Locate and double click on the SetupEQ6132.msi file that you just downloaded. Remember that the file name may have changed since this document was created.

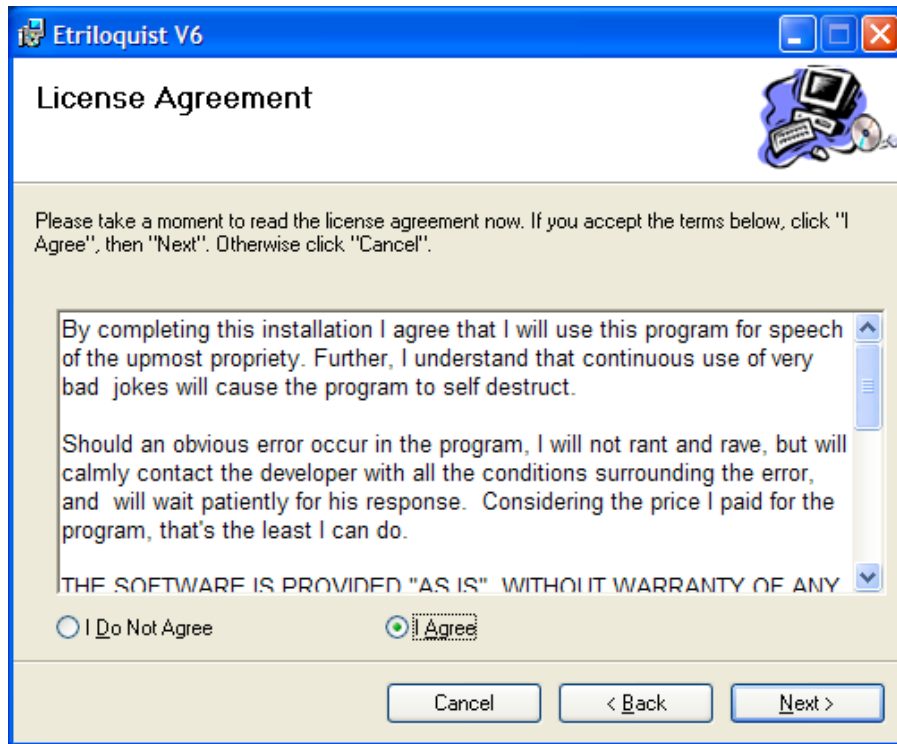
You will typically get some kind of warning from Windows, the one shown below is from Windows XP, yours may be different will still have the same kind of information and response options. Click on the Run button.



This will start the E-Triloquist Setup Wizard...click Next.



**License Agreement: click on the “I Agree” radio button and then click Next.**



**Select Language dialog box, English should be selected by default, click Next.**

**Select Installation Folder dialog box, it is best to allow the program to install into the default folder. Just click Next.**

**Confirm Installation dialog box, click Next.**

**Files are installed, the Installation Complete dialog box appears, click Close.**

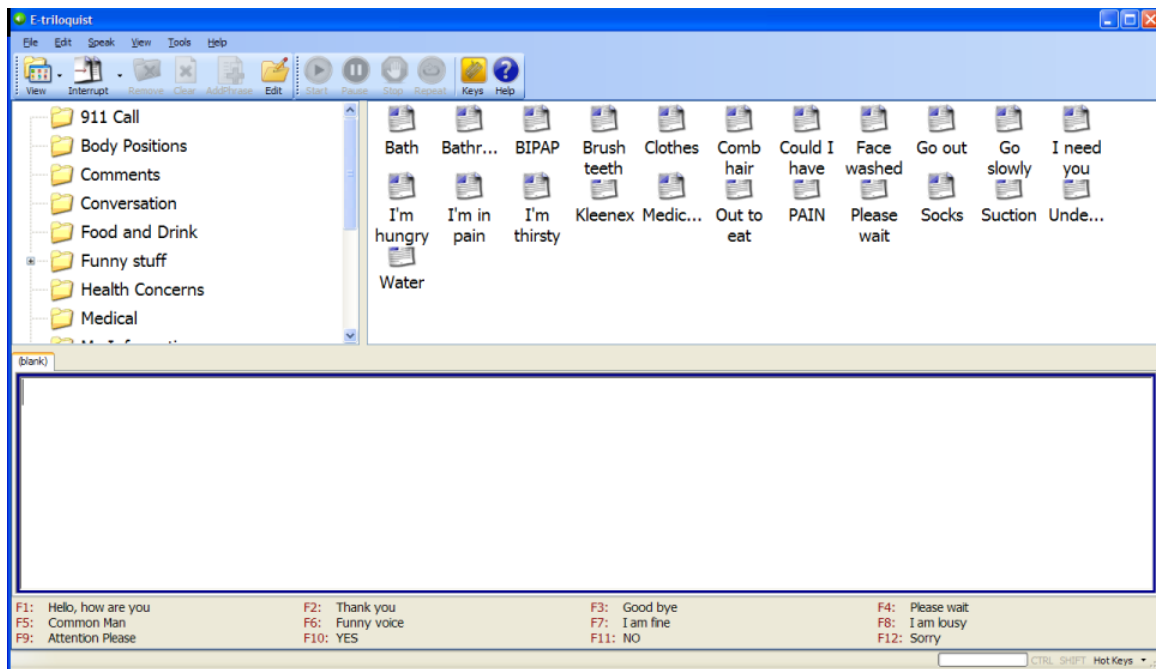
## **Step 3: Configuring and Using E-Triloquist**

**There will be an E-Triloquist executable file in your Start > Programs menu. Click on this file.**

**Help File** E-Triloquist is highly configurable. This tutorial will provide a few tips, but it is not an attempt to show all configuration possibilities. Click on the Help icon on the menu bar and you will access an excellent manual in the PDF format. Please be sure to check out the Help file to better understand the program.



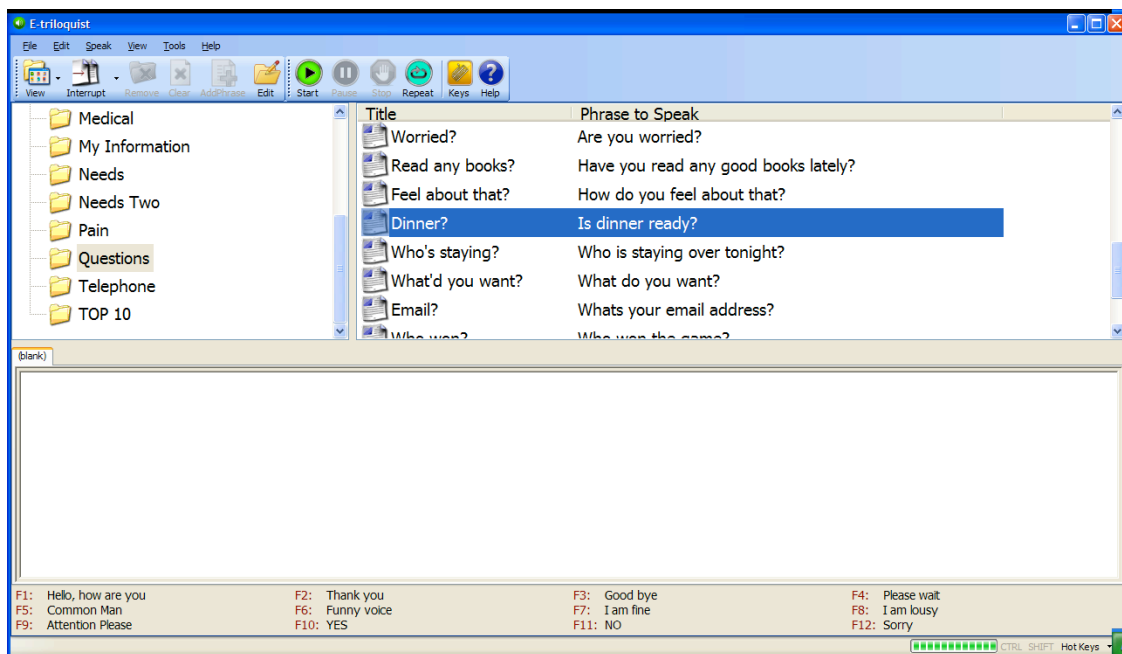
**View Options** There are a number of different ways to display E-Triloquist, for this tutorial I will use the View titled Tree and Icons. An image of that setup is shown below.



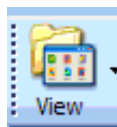
The View shown above has three panes. The upper left pane is the Tree. This has a number of folders with pre-recorded sayings. The upper right pane has Icons that represent the pre-recorded phrases available in the highlighted folder.

As an example, click on the Questions folder in the Tree pane, and notice that a number of icons appear. Click on the Icon titled Dinner? The phrase, "Is dinner ready?" will be spoken.

The Icon view is effective once the user knows the program pretty well. For beginners, it is perhaps more effective to use the View called Tree & List. This will display the title of the phrase and actually shows the Phrase to Speak. However, you may not be able to see all the phrases and will have to scroll through them.



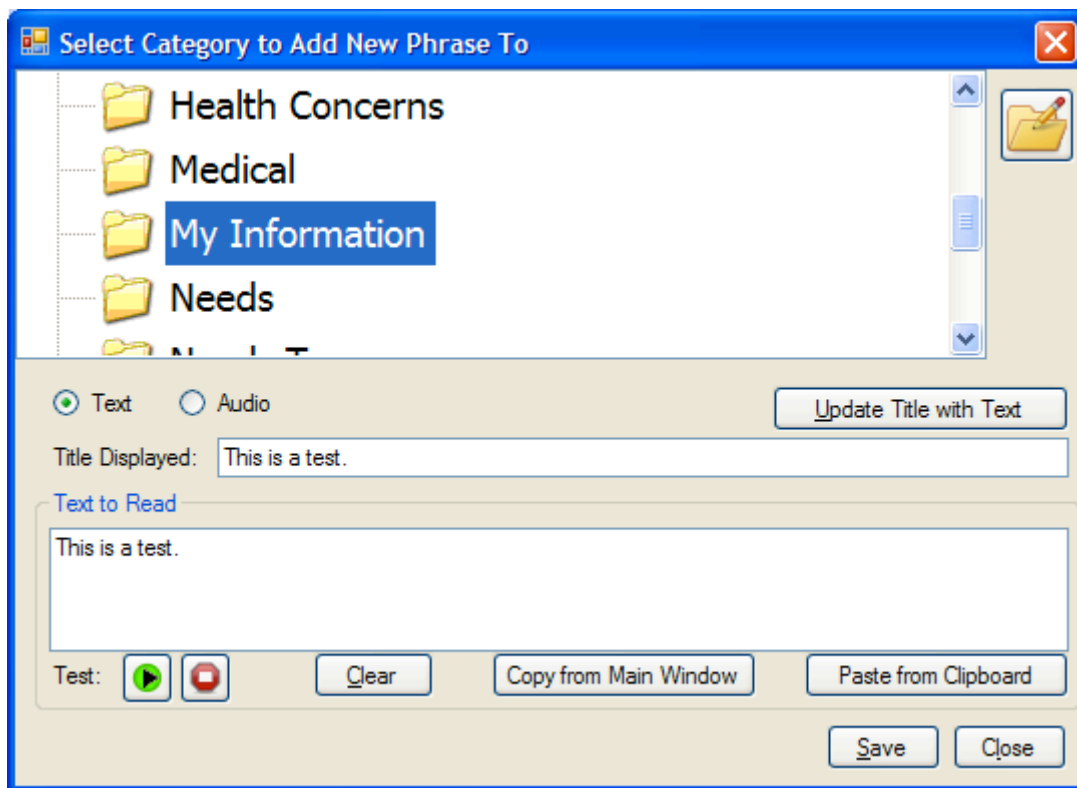
To change the View options, go to the Menu Bar and click on the down arrow to the right of the View icon.



Try all of the options so that you understand the possible views. It is quite simple to change the View quickly. When you close the program it remembers the View state at closure and when you reopen the program, it will return to that closure View state.

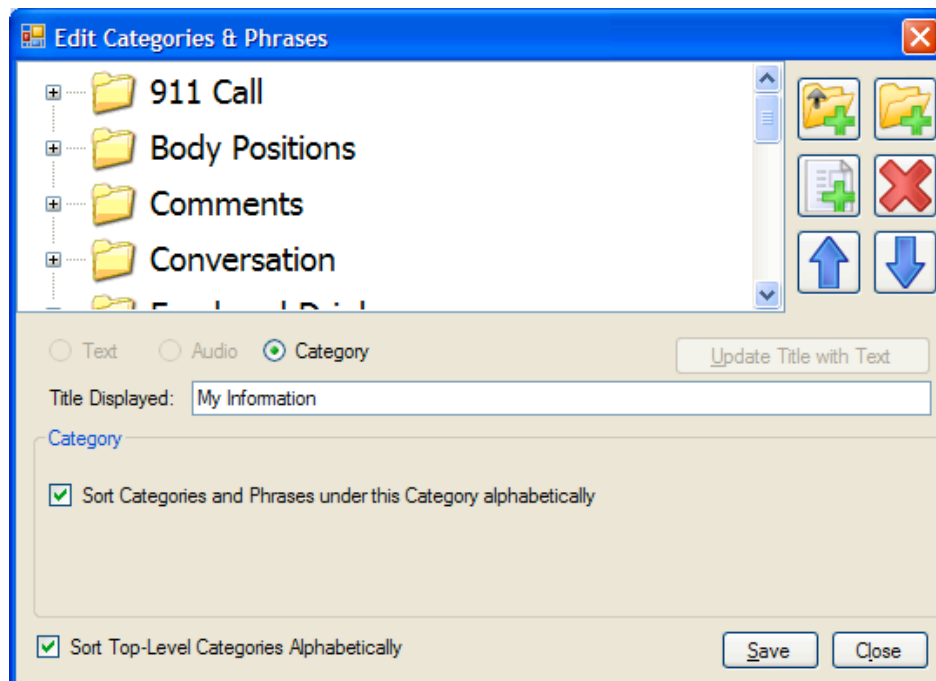
**Main Speaking Window** This is the area where you enter text. After typing a phrase, you may have the program speak that phrase. For example, type “This is a test.” into the Main Speaking Window. Once you begin typing, note that previously unavailable, “grayed-out” icons in the Menu Bar are now available and colorful. One of these buttons is the green “Start Speaking” button. Place your mouse cursor over this button and you will see that a pop-up “ToolTip” assist will tell you the purpose of this button. A left click on that button will activate the speaking of the typed phrase. The free Microsoft Sam, Mike and Mary voices are clearly synthesized and metallic, but they typically are easy to recognize.

There is also an Icon titled AddPhrase with a green arrow. Clicking on this will enable the user to save the typed phrase. In this example, I will save the phrase in the “My Information” folder. The dialog box shown below has many options available but by default the phrase in the Main Speaking Window has already been copied to the Text to Read box. Click Save to place this phrase into the folder.



**Editing or Deleting a Phrase** All recorded phrases may be edited. This includes the pre-recorded phrases that came with the program and any phrases that the user has recorded. This example will show how to edit the phrase that we just created. Then we will delete that phrase.

Click on the Edit icon in the Menu Bar. This opens the Edit Categories and Phrases dialog box shown below.



**Scroll down until you see the “My Information” folder and double click on the icon. Then scroll down to the “This is a test.” phrase and left click on it. Let’s edit the title and the phrase. In the Title Displayed line, delete the title and rename it “Test”. In the Text to Read box add the word “simple” just before the word “test.” Click on the green arrow to verify the phrase. Now click the Save button.**

**To delete a phrase, click on the Edit button, locate the phrase, and left click on it to highlight it. Then click on the large red X icon on the right side of the dialog box. Confirm the deletion. Click on the Save button and then Close the dialog box.**