



Adaptive Computing Lab

Programming the Kensington Expert Mouse®

TrackballWorks™ 1.01 for Windows

The TrackballWorks™ software package is the new software program that enables the user to set custom features on the Kensington Expert Mouse®. Example: assign actions to the four programmable keys on the Expert Mouse® trackball.

This new package is easier to use than the older MouseWorks® software but it also does not have as many features as the older program. The user may program the Expert Mouse® with either of these packages but you should not try to use both programs at the same time. For a comparison of these packages see the ACLab tutorial at:

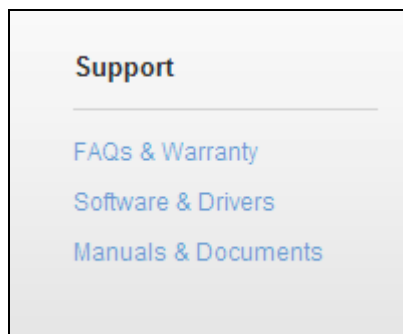
http://assisttech.info/resources/docs/mouseworks_v_trackballworks.pdf

The older software came with the Expert Mouse® on a CD. The new TrackballWorks™ must be downloaded from the Internet.

Downloading TrackballWorks™ for Windows

Go to: <http://www.kensington.com/>

You may have to provide North America and USA information to get to the homepage. At the bottom of the page, in the center, select the “Software and Drivers” link.











When asked to enter the product name, begin entering Expert Mouse® in the box.

Software & Drivers

Please enter a product name or code into the box below to find your software

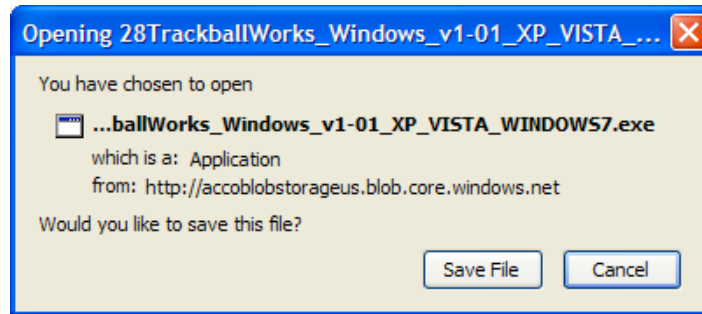
No software can be found to match your search

After a couple of letters you will be offered a page of links to a number of software download options as shown below. Click on the TrackballWorks™ for Windows 1.01 link.

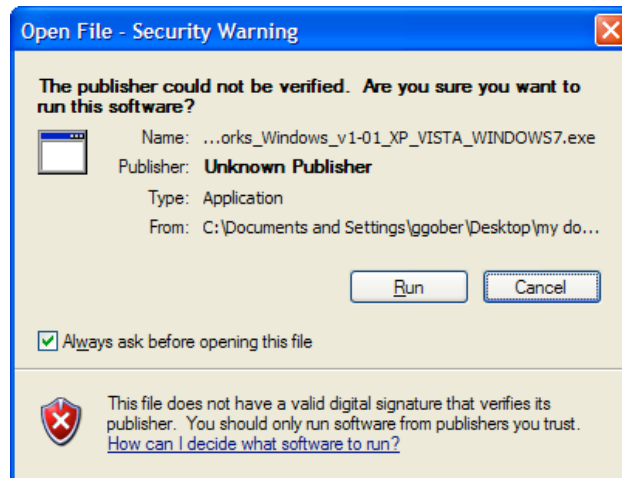
-  **MouseWorks Windows (6.2.2)**
Sep 25, 2009
-  **Kensington MouseWorks® for Mac OS X Version 3.0**
Oct 20, 2009
[Instructions/Notes](#)
-  **TrackballWorks™ for Windows 1.01**
Jun 02, 2010
-  **TrackballWorks™ for Mac 1.00**
Jun 02, 2010
-  **TrackballWorks™ BETA Software for Windows (32-bit)**
Jul 10, 2011
[Instructions/Notes](#)
-  **TrackballWorks BETA Software for Window (64-Bit)**
Jul 10, 2011
[Instructions/Notes](#)
-  **TrackballWorks™ BETA Software for Mac**
Jul 10, 2011
[Instructions/Notes](#)
-  **TrackballWorks™ for Windows 1.04**
Jul 10, 2011
[Instructions/Notes](#)

Installation of TrackballWorks™ for Windows

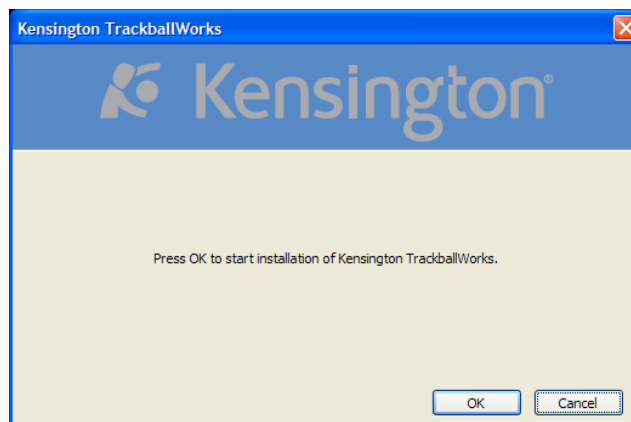
When you get a dialog like this one, opt to Save File.



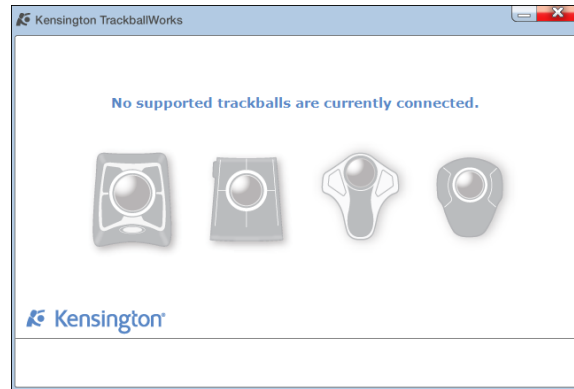
After the file is downloaded double click on it to start the install. If you get a Security Warning dialog box similar to the one below, select Run.



Select OK.



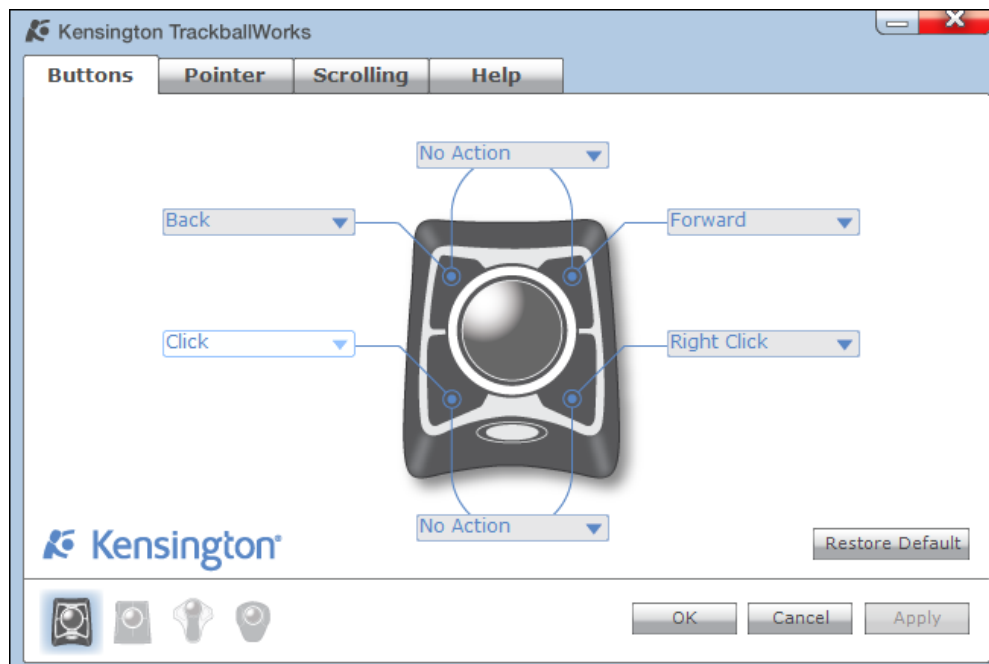
Files will be installed. When the “Install Complete” message appears, click the Finish button. A red trackball icon for the program will appear in the System Tray. If your trackball is not plugged into your computer via a USB port you will get a box similar to the one shown below. You should plug the trackball into an available USB port.



After plugging in the Expert Mouse® trackball the TrackballWorks™ configuration panel will open. You are now ready to program the trackball.

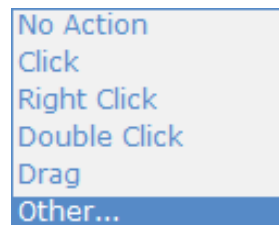
Configuration using TrackballWorks™ for Windows

To open the TrackballWorks™ configuration panel double click on the red trackball icon in the System Tray or go to Start > Programs > Kensington TrackballWorks > TrackballWorks.



The Buttons tab offers programmable changes for the Expert Mouse®. Note that the bottom left button is defined as Click and it is not alterable. At the top and bottom are options for clicking two buttons at once and these are typically not employed by users with a disability. Thus, the three buttons that are usually programmed are the lower right, upper left and upper right buttons.

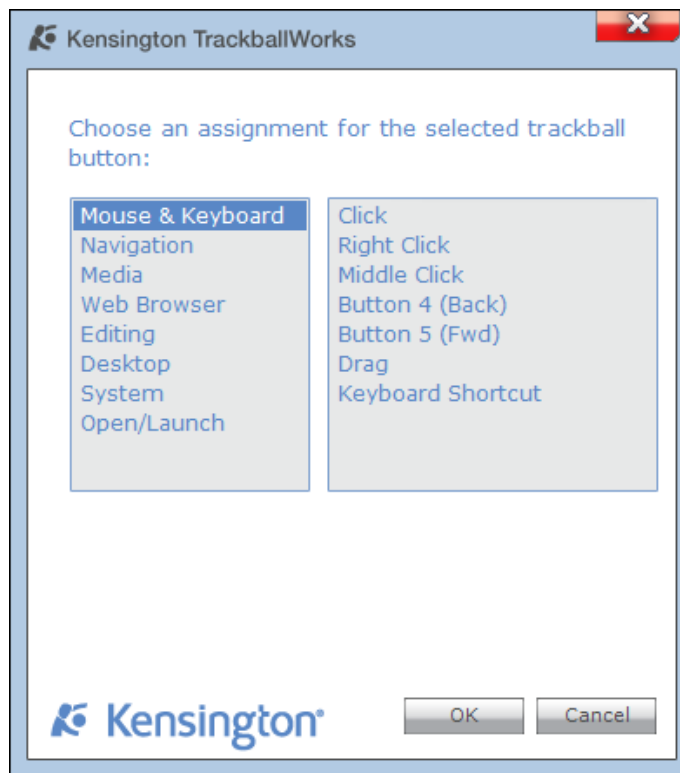
To change the function away from the default setting you would click on the down arrow for the appropriate button and a drop down menu will cascade. Clicking on any of these choices and pressing the Apply button will change the function of that button. The default upper left button setting is Back. This would take you back to a previous page if you were on the Internet. However, a more usable action for a user that is struggling with click the mouse fast enough might be to make that button a Double Click.



To accomplish this click on Double Click option, then click the Apply button at the bottom of the box. The new function should now be the label for that button. Click OK to close the TrackballWorks panel and then test the new programmed function. Navigate onto any icon on the Desktop. Click the upper left once and see if it functions as a Double Click.

As a typical setup for users I recommend the upper left button = Double Click and the upper right button = Drag. This allows the user to click the Drag button once to enter the mode of being able to “Drag and Drop” an object. The first click “grabs the object, moving the trackball will navigate to a new location and a second click of the upper right button will Drop the object. This is also very hand to resize windows or use the scroll bar to scroll up/down or across a page.

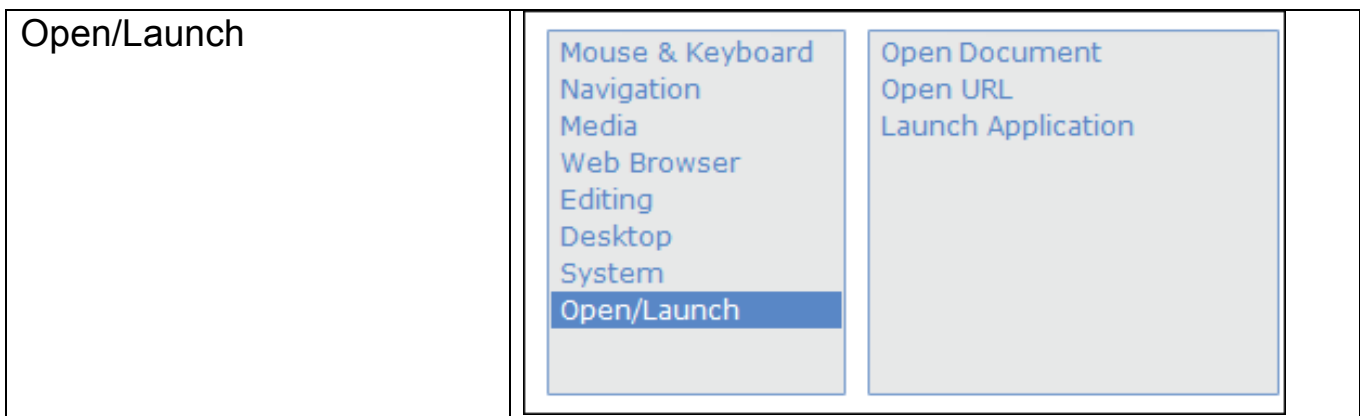
For more button programming options click on the “Other...” option at the bottom of the drop down choices. This will open a dialog box with groups of options listed in the left pane. Assignment options that available in the selected group are listed in the right pane. To select any assignment option, click on the choice in the right pane and then click the OK button.



The other assignment options that are available for programming are shown in the table below.

<p>Navigation</p>	
<p>Media</p>	

Web Browser	<ul style="list-style-type: none"> Mouse & Keyboard Navigation Media Web Browser Editing Desktop System Open/Launch 	<ul style="list-style-type: none"> Back Forward Stop Refresh
Editing	<ul style="list-style-type: none"> Mouse & Keyboard Navigation Media Web Browser Editing Desktop System Open/Launch 	<ul style="list-style-type: none"> Undo Redo Copy Cut Paste Select All Find
Desktop	<ul style="list-style-type: none"> Mouse & Keyboard Navigation Media Web Browser Editing Desktop System Open/Launch 	<ul style="list-style-type: none"> Maximize/Restore Window Minimize Window Close Window Show Next Window Minimize All Show Desktop
System	<ul style="list-style-type: none"> Mouse & Keyboard Navigation Media Web Browser Editing Desktop System Open/Launch 	<ul style="list-style-type: none"> Capture Screen to Clipboard Task Manager Lock Screen Open Explorer Window Show Run Dialog Open System Search

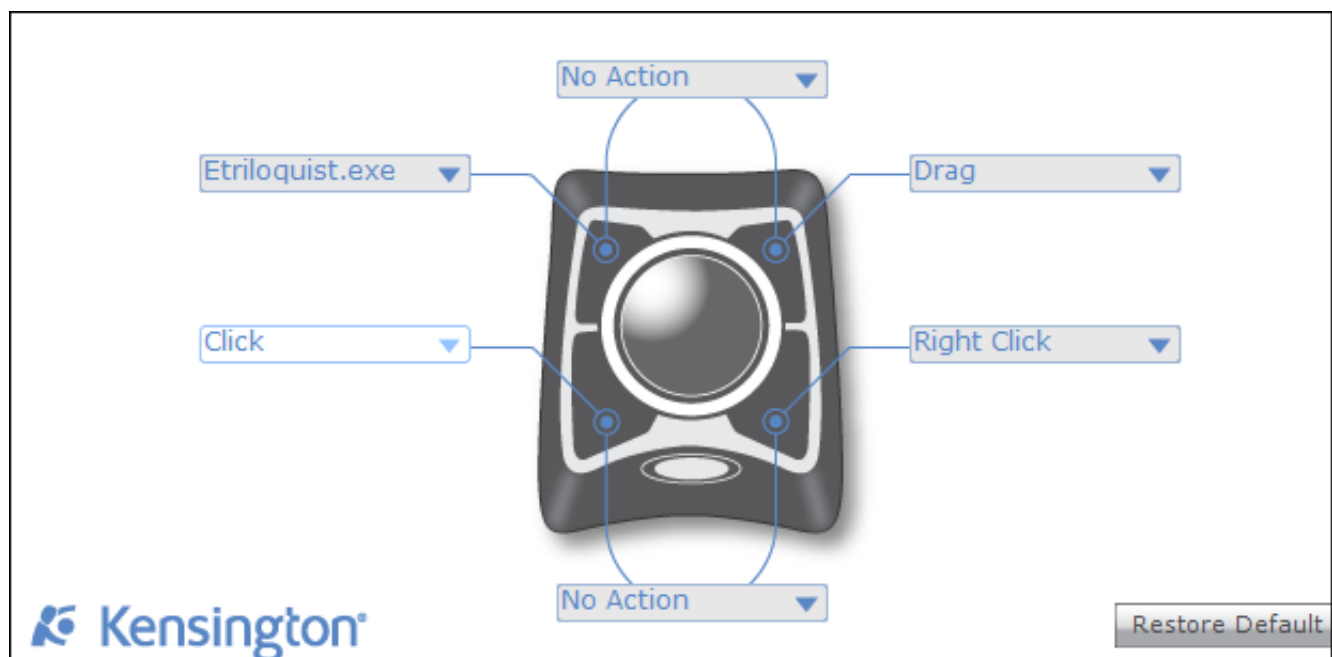


The Open/Launch assignment options enable you to open a document, launch a program, or open a website.

When you click on Open Document in the right pane, a Browse button will appear, click it and a Windows Open box will let you navigate to any document on your computer and set it to open when that button is clicked.

The Open URL option will let you enter a website address.

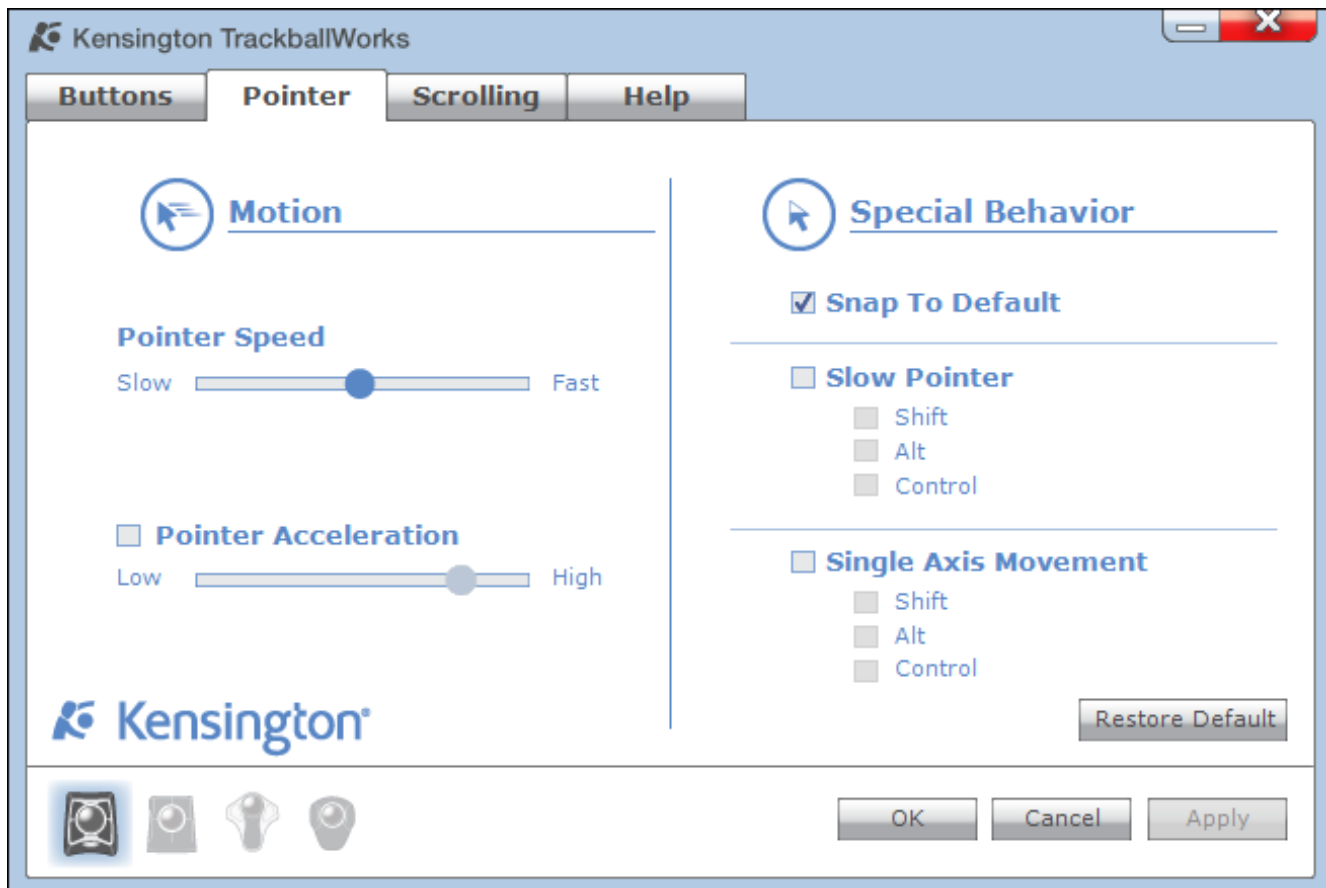
The Launch Application option and then the Browse button will let you select a program to run when that button is clicked. After an executable file is selected it will be shown in the main Buttons panel. In the picture below the upper left button will now open the E-triloquist program.



Configuration Settings using TrackballWorks™ for Windows

Two other tabs in the panel allow the user to set a number of important mouse settings. Many of these settings could also be changed in the Mouse applet in the Control Panel.

Pointer Configuration:



The Pointer tab panel is shown above. On the left side are two settings involving Motion. The Pointer Speed means how fast will cursor move when you move the trackball. Pointer Acceleration is a feature that means if I move the trackball slowly an inch the pointer moves slowly on the screen. If I move the trackball quickly an inch the pointer would move more quickly on the screen. I typically recommend that you start with the Pointer Speed in the center location on the bar and that the user not put a check in the Pointer Acceleration box thus turning this feature off. After getting used to the device, if the user feels the response is slow that these setting may be changed.

On the right side are some special behavior settings. I recommend to all users that they use the Snap To setting by putting a check in the box as shown above.

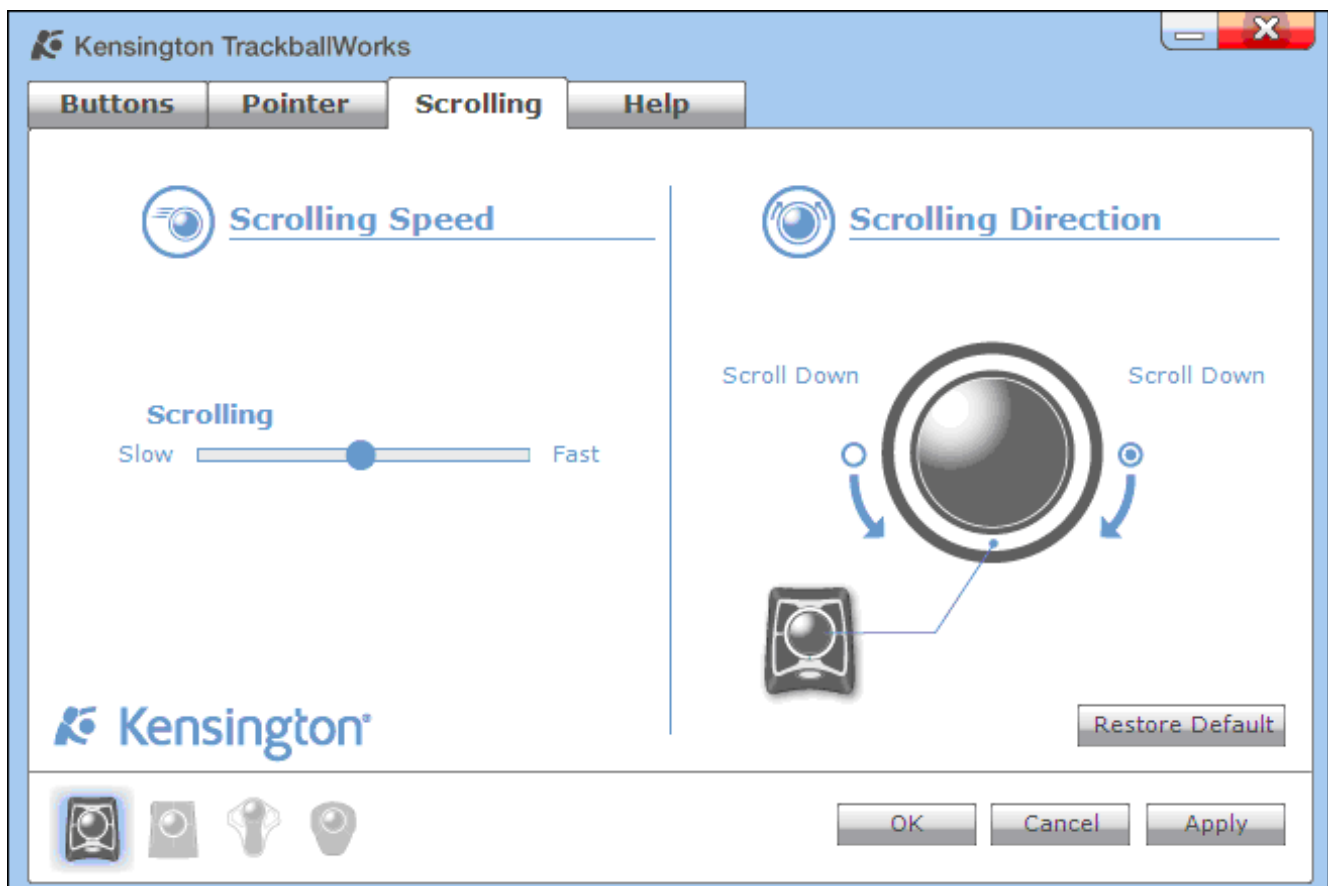
This means that Windows will automatically move the cursor to the most logical answer button in a Dialog Box saving the user effort to move the cursor.

The Slow Pointer feature means that no matter what the Pointer Speed is set on the user can slow down the pointer temporarily by pressing one of the modifier keys (Shift, Alt, Control) while moving the trackball. To turn on this feature you would put a check in Slow Pointer box and a check in one of the three modifier key boxes.

By checking the Single Axis Movement option and selecting one of the modifier keys you would enable the axis locking feature. Thus if you pressed the modifier and moved the trackball the cursor would only move straight up and down on the y-axis. If you released the modifier key and then pressed it again the cursor would only move left and right on the x-axis.

These two features might be beneficial if the user is able to use both hands but it may be quite problematic for a one-handed, one-fingered, or one-point stick user.

Scrolling Configuration:



The Scrolling tab panel is shown above. These settings affect the Scroll Ring which surrounds the trackball on the Expert Mouse®. On the left is the Scrolling Speed bar, I recommend starting in the center. On the right is the Scrolling Direction setting. Most users scroll down more than they scroll up. Thus, I recommend that they set the Scroll Down for the direction that they are best able to move. To change the setting click on the Bullet, then Apply and OK.