



Adaptive Computing Lab

How to Program Expert Mouse® Buttons in MouseWorks Windows OS

The MouseWorks Mouse Properties Control Panel applet may be accessed by:

Start Menu > Kensington MouseWorks > Kensington MouseWorks icon

or

Start Menu > Settings > Control Panel > Mouse.

By default the Mouse Properties panel opens to the Buttons tab.

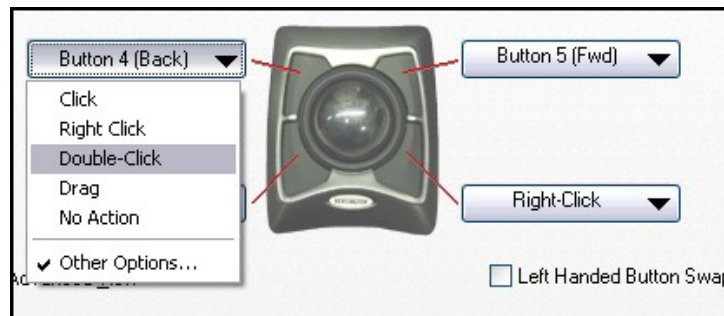


Application Settings: Global

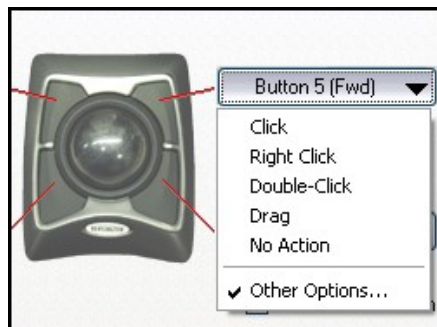
Programming

By default, the Global radio button is selected and the settings made on this page work globally...for example, on the Desktop. We want to program the upper left button to be a Double Click and the upper right button to become a Drag (and Drop) feature.

Click on the down menu for Button 4, the upper left button, and select the Double-Click.



On the Button 5 down menu, opt for the Drag.



Click Apply, click OK, go to desktop and test these settings.

Application Settings: Selected

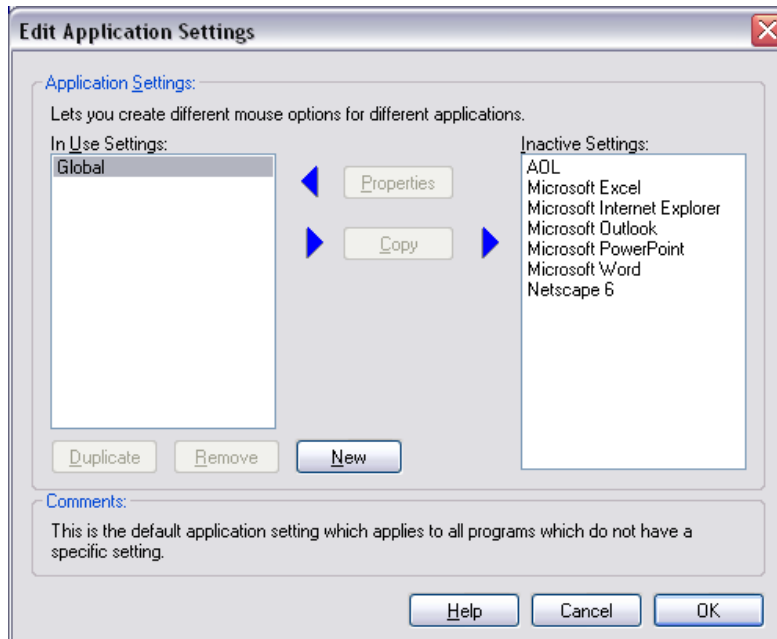
Programming, example 1

It is possible to program the buttons on the Expert Mouse to perform certain functions in a specific application. This example will create a Copy button and a Paste button to be used in Microsoft Word. At this point, we only have Global settings. We will have to create some Selected Applications.

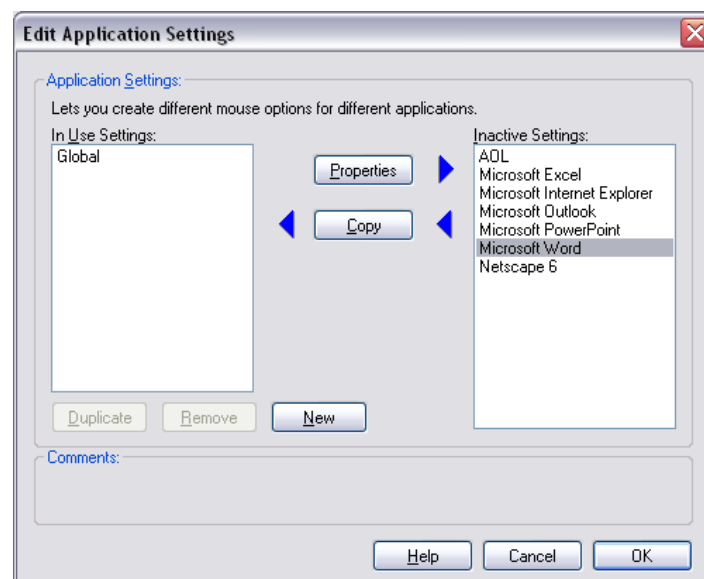
Open MouseWorks and click on the Selected radio button, click on “Add/Edit Applications...”in the drop down menu.



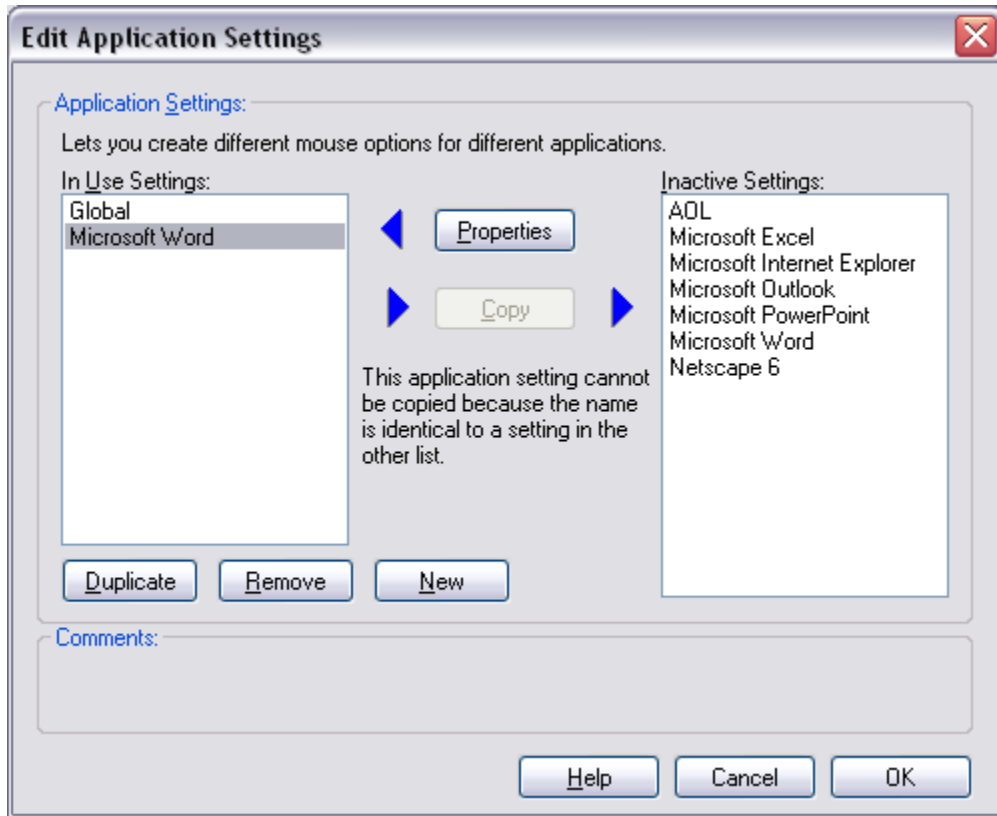
This opens the Edit Application Settings dialog box shown below.



The program we are interested in, Microsoft Word, is listed in the right pane. Select Microsoft Word. This makes the Copy button available.



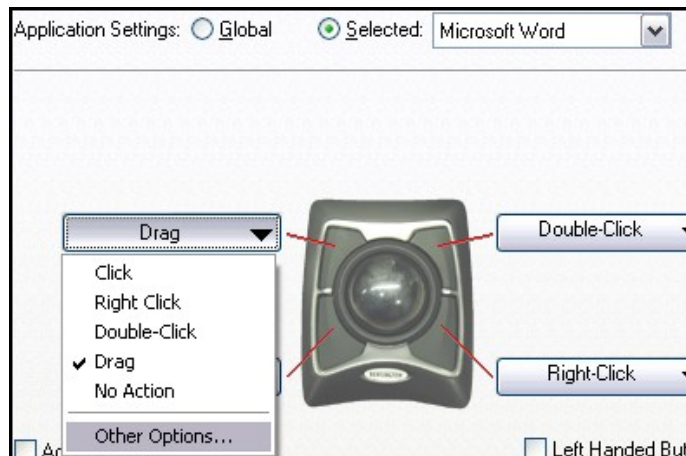
After clicking the Copy button, Microsoft appears in the left pane...this is a list of In Use Settings. Click the OK button at the bottom of the page.



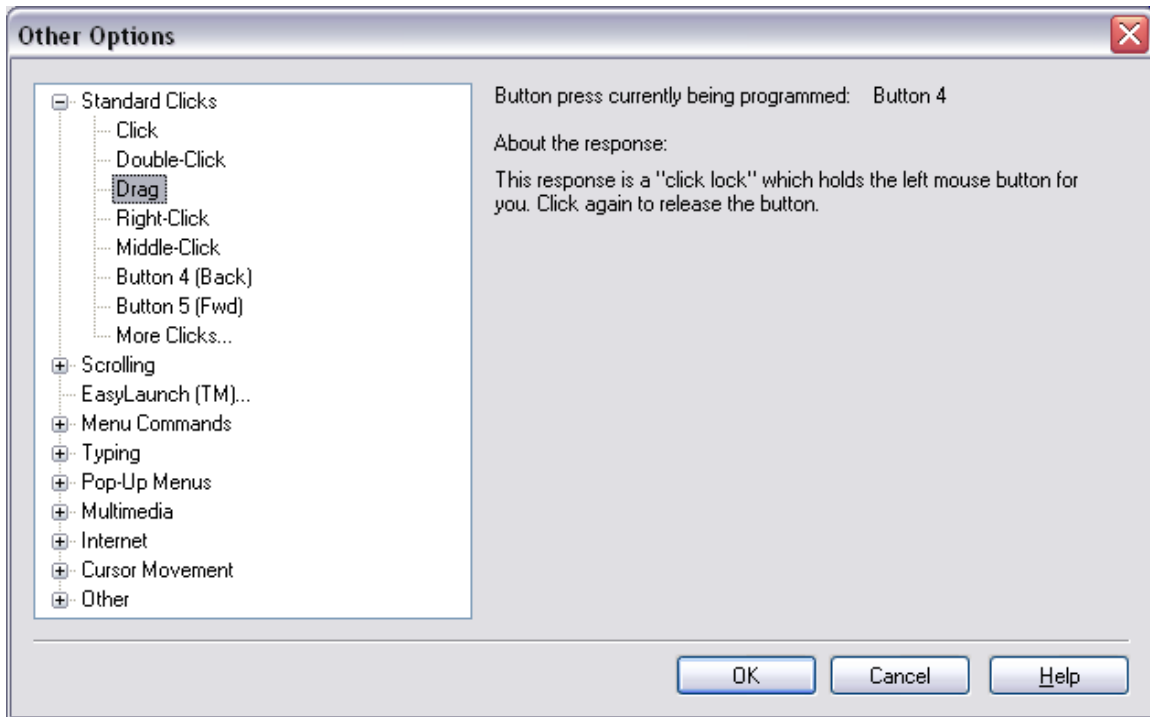
Now Microsoft Word should appear in the Selected Applications down menu.



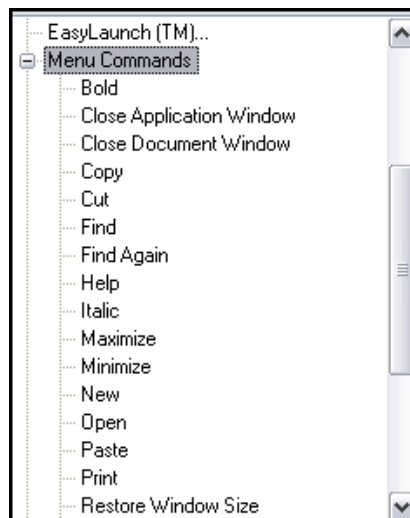
Go to the buttons pictured and click on the down menu for the upper left button. Select the Other Options...



This opens the Other Options Dialog Box...this has a panel on the left with a Tree menu. Click on the + sign to the left of Menu Commands.



This opens the Menu Commands as shown below.



Click on Copy and then OK, this programs that button to transmit the Copy command.

Repeat the above and make the upper right button transmit the Paste command.

Click OK, close the MouseWorks panel and test out the newly programmed buttons in Microsoft Word.

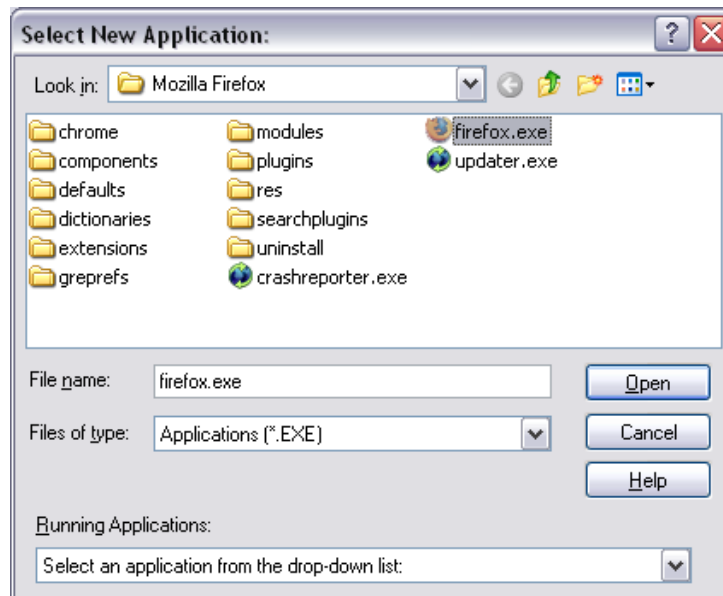
Application Settings: Selected

Programming, example 2

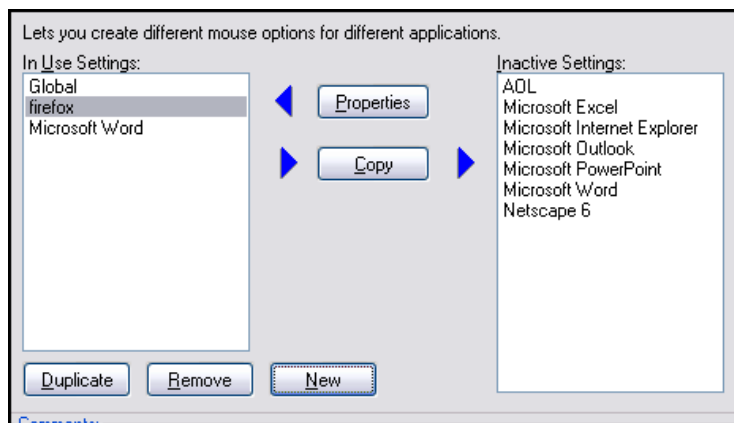
Now we will program the two upper buttons to have special functions in an Internet browser. We will program the upper left button be Browser Back and the upper right button to be Browser Forward.

Click on Selected, Edit Add ...Edit Applications Setting Dialog Box and because our program, Firefox, is not the right pane, we will click on the New button.

I clicked on the Look In drop down menu and navigate to the location of the Firefox.exe file, clicked on that file and clicked on the Open button.



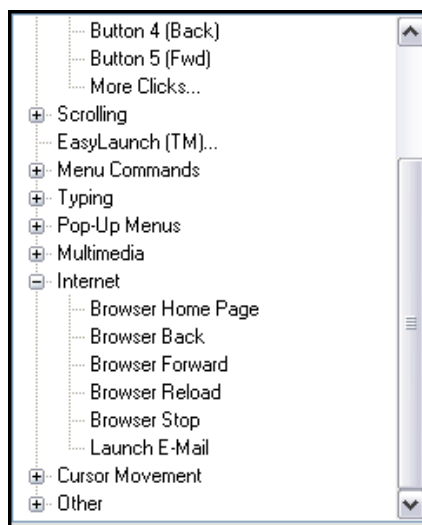
Click on open...Now Firefox shows up in the left pane. Click Ok.



To program these buttons, make sure that the Selected radio button is selected and the Firefox shows in the Drop Down Menu panes as shown below.



Click on the upper left button Down Menu...Click on More Options...then navigate to the Internet and click on the plus sign to the left. You will see options as shown below. Select Browser Back and click OK.



Repeat the sequence for the upper right button...select browser forward, Click OK.

Back in the main Mouse Properties page, click Apply and click OK.

Now these buttons are programmed, close MouseWorks and test your newly programmed Internet buttons.