



Adaptive Computing Lab

Programming the Kensington Expert Mouse Windows Operating Systems

The MouseWorks software package enables the user to set custom features. Example: assign actions to the four programmable keys on the Expert Mouse Trackball. Some of the tabs allow changes to Global settings or by specific applications.

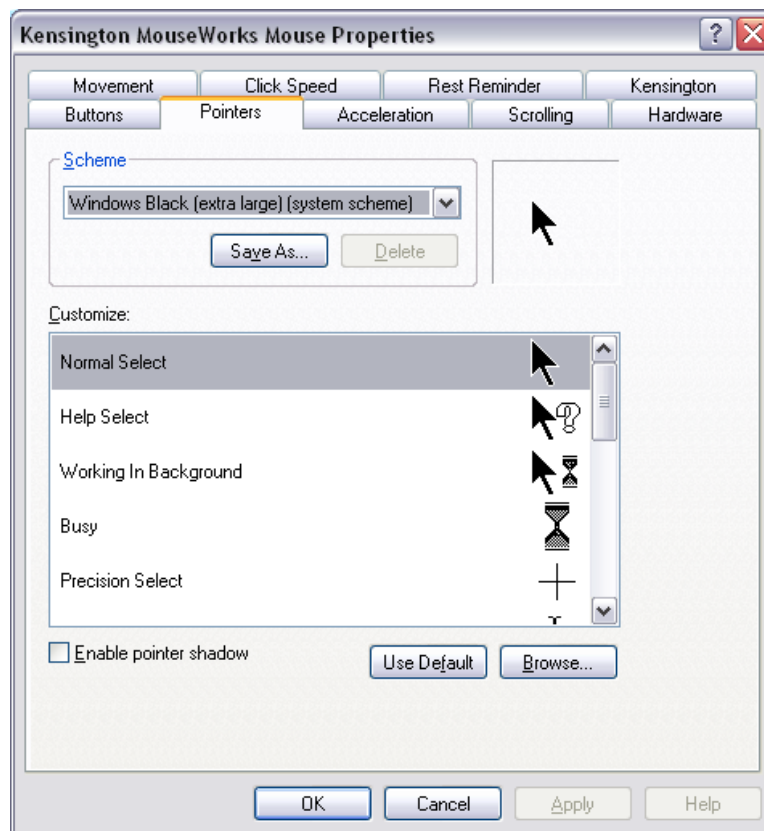
The software comes with the Expert Mouse on a CD. After installing the software package, the Windows Mouse Properties dialog box is replaced with the box shown below. You may get to that box via the Start Menu > Kensington MouseWorks > Kensington MouseWorks icon or through the Start Menu > Settings > Control Panel > Mouse.



There are nine tabs across the top of the panel. Brief explanations of each tab are provided in the following sections:

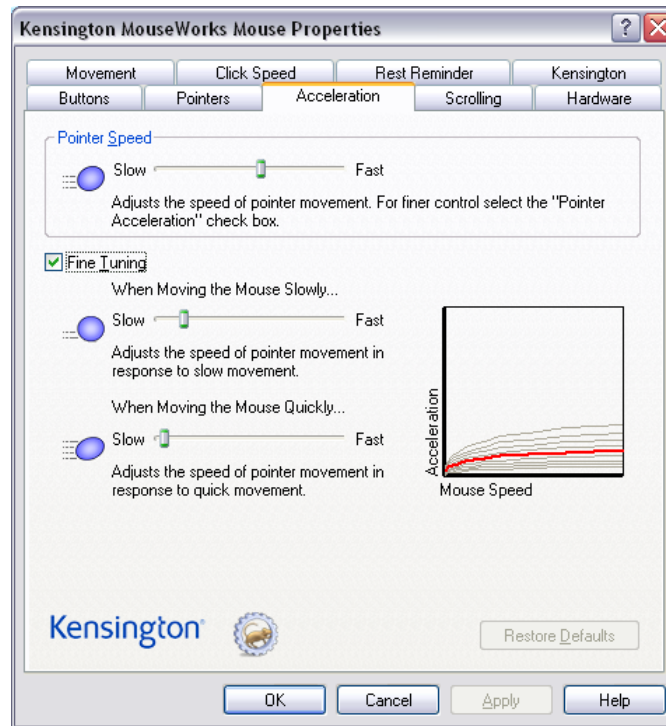
Buttons: this is the default tab...image is shown above...this panel allows customization of the programmable buttons. Further instructions are provided in the ACLab tutorial called Programming Expert Mouse Buttons.

Pointers: accesses the Windows pointer scheme list...click on the down arrow in the Scheme drop down menu, select a pointer scheme and click the OK button to change the scheme. You may select an entire scheme or create custom schemes by browsing an opting for a unique pointer for each type.

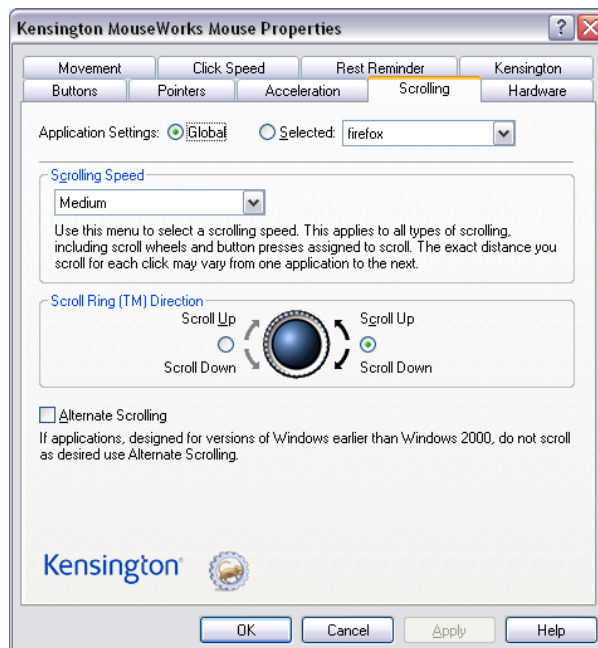


For more information about selecting alternate mouse pointer schemes, see the ACLab tutorial titled “Big Cursors for the Mouse: Windows XP”.

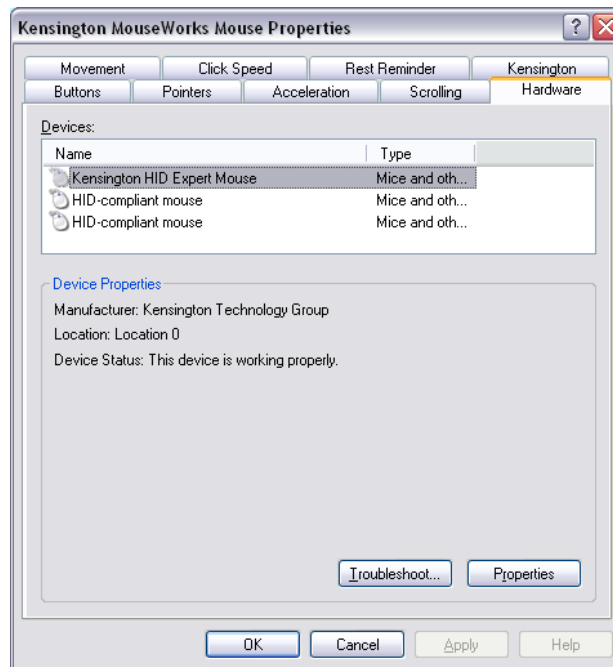
Acceleration: allows changes to the speed of the pointer via a sliding scale...putting a check in Fine Tuning box offers more options...



Scrolling: allows changes to speed and directionality of the scroll ring on the Expert Mouse

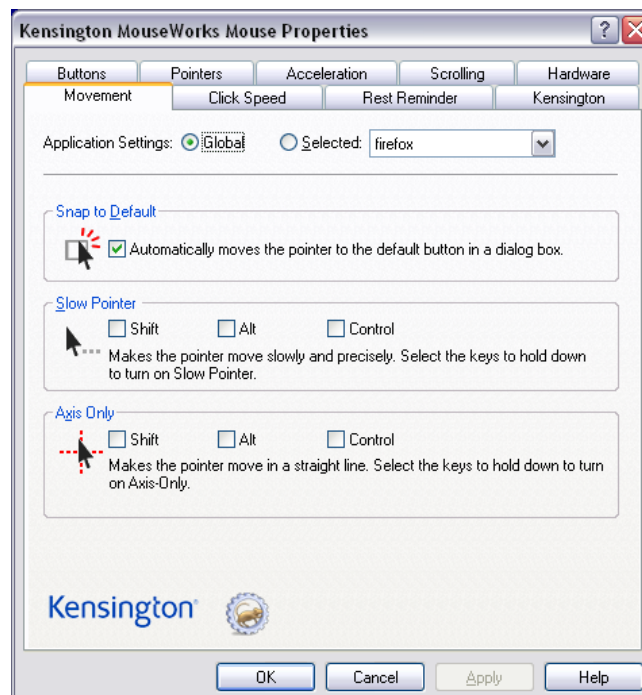


Hardware: Accesses the Windows mouse hardware list



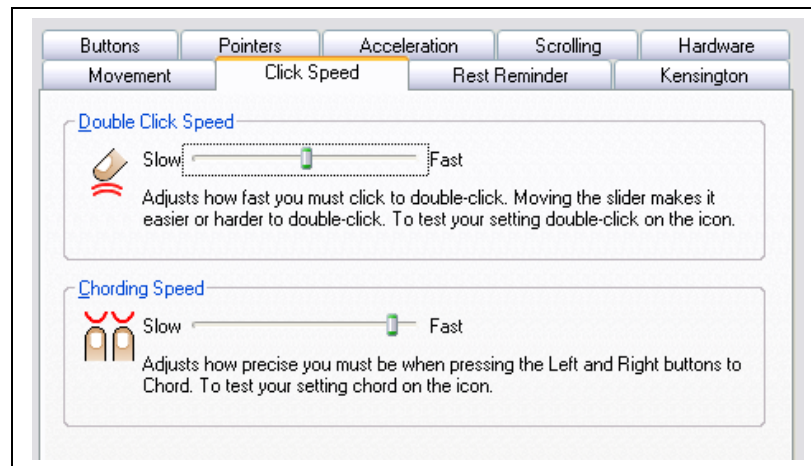
Movement: apply changes to

- SnapTo feature...pointer moves automatically to default button
- Slow Speed feature...set pointer speed and precision
- Axis Only feature...set pointer to move only on X or Y axis



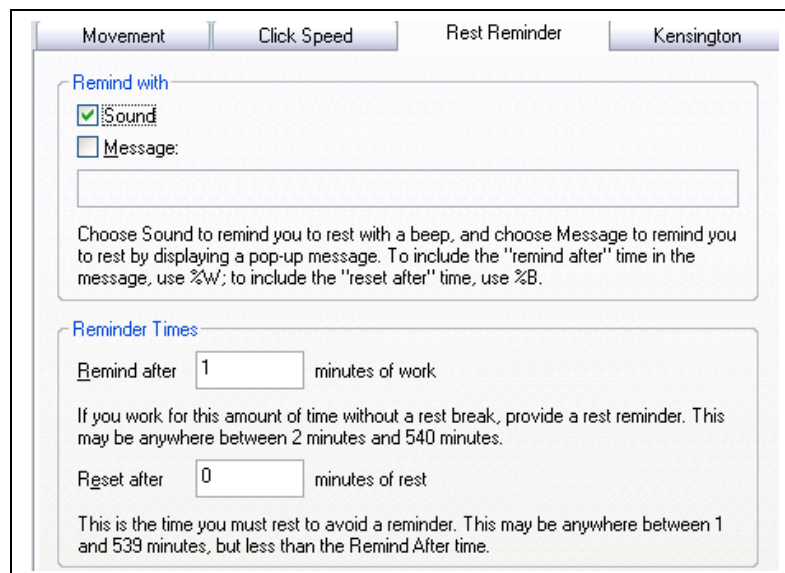
Click Speed : apply changes to

- Double Click Speed...changes how fast the double click must occur
- Chording Speed...adjusts the speed at which you must hit buttons for Chording



Rest Reminder:

The Rest Reminder allows you to set an alarm at a varying interval to get you to rest your hands to cut down on RSI (Repetitive Stress Injuries).



Kensington:

Allows changes to MouseWorks program.

